

(SVHC)

CANEC23009890202

2023 09 21

1

13



(SVHC)

1.

<http://echa.europa.eu/web/guest/candidate-list-table>

2. REACH

2.1

1907/2006 EC 33 57 59
0.1%

1907/2006 EC 57
59 (a) 1 / / 7 4 (b)
0.1%

2021 SVHC 1 5 0.1% w/w
SCIP 2008/98/EC ECHA

2.2

SVHC

31 1907/2006 REACH

2.3

0.1% (w/w) / 1272/2008 CLP
1907/2006 REACH

(SDS)

- 1272/2008 CLP
- 1272/2008 CLP
- 1272/2008 CLP ;
- 1272/2008 CLP

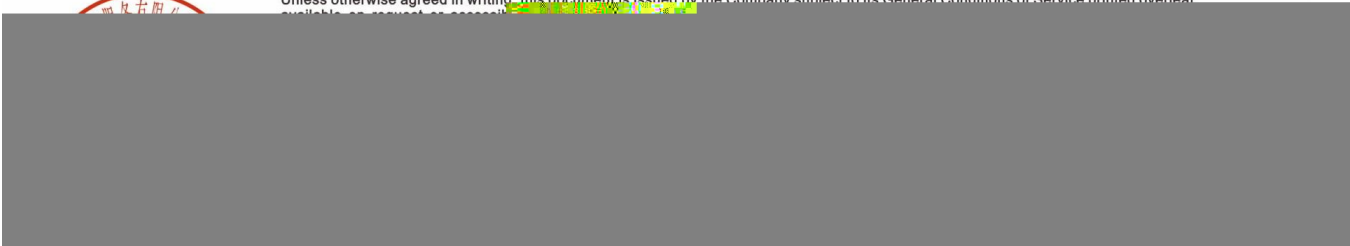
(a) 0.2 1 (w/w)

(b) PBT vPvB 0.1 (w/w)

(c) 0.1

(w/w)

(d)





(SVHC)

CANEC23009890202

2023 09 21

3 13

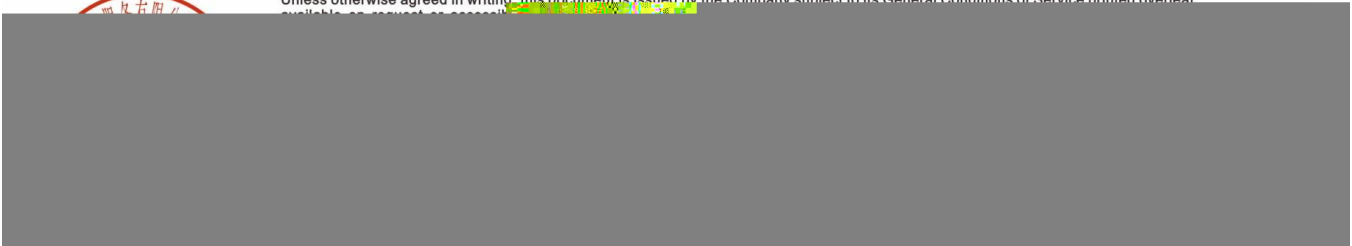
ID		ID	SGS ID
001		A1	CAN23-0098902-0001.C001

SGS

ICP-OES UV-VIS GC-MS HPLC-DAD/MS



Unless otherwise agreed in writing, this document is issued by the Company subject to its General Conditions of Service printed overleaf available on request or access <https://www.sgs.com>





CANEC23009890202

2023 09 21

4 13

(SVHC)

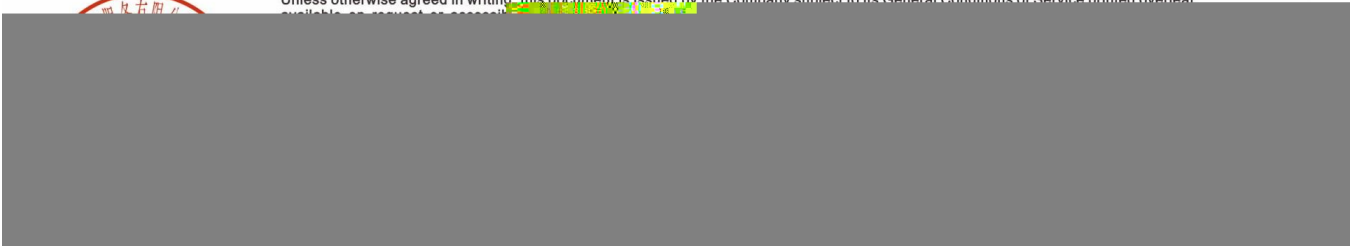
		CAS No.	001 (%)	RL (%)
-	SVHC	-	ND	-

SVHC

		CAS No.	001 (%)	RL (%)
/	SVHC	-	ND	-



Unless otherwise agreed in writing, this document is issued by the Company subject to its General Conditions of Service printed overleaf available on request or access <https://www.chemwatch.com>





(SVHC)

SVHC:

			CAS No.	RL (%)
I	1	4,4'- (MDA)	101-77-9	0.050
I	2	2,4,6- -5- ()	81-15-2	0.050
I	3	C10-13 ()	85535-84-8	0.050
I	4		120-12-7	0.050
I	5	(BBP)	85-68-7	0.050
I	6	(2-) (DEHP)	117-81-7	0.050
I	7	(TBTO)	56-35-9	0.050
I	8	*	7646-79-9	0.005
I	9	*	1303-28-2	0.005
I	10	*	1327-53-3	0.005
I	11	(DBP)	84-74-2	0.050
I	12	(HBCDD) (- HBCDD, -HBCDD, -HBCDD)	-	0.050
I	13	*	7784-40-9	0.005
I	14	*	10588-01-9 /7789-12-0	0.005
I	15	*	15606-95-8	0.005
II	16	2,4-	121-14-2	0.050
II	17		79-06-1	0.050
II	18	**	90640-80-5	0.050
II	19	**	90640-81-6	0.050
II	20	**	91995-15-2	0.050
II	21	**	91995-17-4	0.050
II	22	**	90640-82-7	0.050
II	23		84-69-5	0.050
II	24	(C.I. 104)*	12656-85-8	0.005
II	25	*	7758-97-6	0.005
II	26	(C.I. 34)*	1344-37-2	0.005
II	27	**	65996-93-2	0.050
II	28	(2-)	115-96-8	0.050
III	29	*	7789-09-5	0.005
III	30	*	-	0.005
III	31	*	12179-04-3 /1303-96-4 /1330-43-4	0.005
III	32	*	7789-00-6	0.005
III	33	*	7778-50-9	0.005
III	34	*	7775-11-3	0.005





CANEC23009890202

2023 09 21

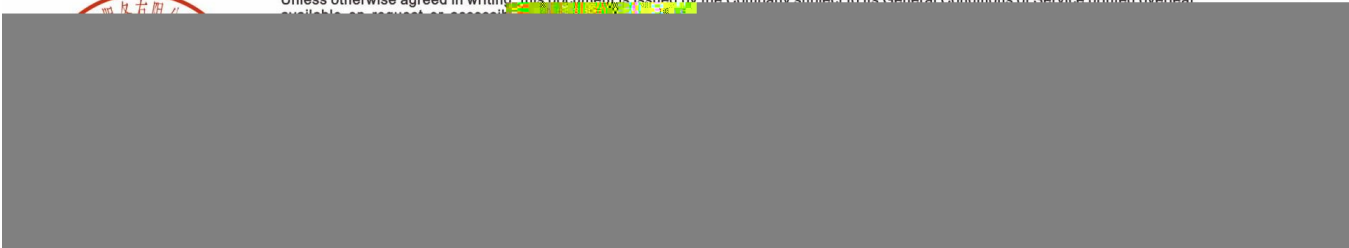
6 13

(SVHC)

			CAS No.	RL (%)
IV	38		109-86-4	0.050
IV	39	, , *	-	0.005
IV	40	*	1333-82-0	0.005
IV	41	*	513-79-1	0.005
IV	42	*	71-48-7	0.005
IV	43	*	10141-05-6	0.005
IV	44	*	10124-43-3	0.005
V	45	1,2,3-	96-18-4	0.050
V	46	1,2- - (C6-8) (C7)	71888-89-6	0.050
V	47	1,2- - (C7-11) ()	68515-42-4	0.050
V	48	1- -2-	872-50-4	0.050



Unless otherwise agreed in writing, this document is issued by the Company subject to its General Conditions of Service printed overleaf.



CANEC23009890202

2023 09 21

7

13



(SVHC)

			CAS No.	RL (%)
VIII	116	*	1317-36-8	0.005
VIII	117	*	12036-76-9	0.005
VIII	118	*	1314-41-6	0.005
VIII	119	*	12060-00-3	0.005
VIII	120	*	12626-81-2	0.005
VIII	121		625-45-6	0.050
VIII	122	1,2-	75-56-9	0.050
VIII	123	N,N-	68-12-2	0.050
VIII	124	N-	79-16-3	0.050
VIII	125		776297-69-9	0.050
VIII	126	-	97-56-3	0.050
VIII	127	2-	95-53-4	0.050
VIII	128		72629-94-8	0.050
VIII	129	*	12065-90-6	0.005
VIII	130	*	8012-00-8	0.005
VIII	131	*	68784-75-8	0.005
VIII	132	*	11120-22-2	0.005
VIII	133	*	62229-08-7	0.005
VIII	134	*	78-00-2	0.005
VIII	135	*	12202-17-4	0.005
VIII	136		307-55-1	0.050
VIII	137	*	1319-46-6	0.005
VIII	138	*	12141-20-7	0.005
IX	139	4- ()	-	0.050
IX	140	(APFO)**	3825-26-1	0.050
IX	141	*	1306-19-0	0.005
IX	142		7440-43-9	0.005
IX	143	(DPP)	131-18-0	0.050
IX	144	(PFOA)	335-67-1	0.050
X	145	*	1306-23-6	0.005
X	146		84-75-3	0.050
X	147	C.I. 28	573-58-0	0.050
X	148	C.I.		





CANEC23009890202

2023 09 21

9 13

(SVHC)

			CAS No.	RL (%)
XII	157	2- -2- -4,6- (UV-320)	3846-71-7	0.050
XII	158	- (2-) (DOTE)	-	0.050
XII	159	*	7790-79-6	0.005
XII	160	*	10124-36-4 /31119-53-6	0.005
XII	161	- (2-) (DOTE) - (2-) (MOTE)	-	0.050
XIII	162	1,2- , (C6-10) / 1,2- , 0.3	-	0.050
XIII	163	5- -2-(2,4- -3- -1-)-5- -1,3- [1] 5- -2-(4,6- -3- -1-)-5- -1,3- [2] [[1] [2]]	-	0.050
XIV	164	1,3-	1120-	



Unless otherwise agreed in writing, this document is issued by the Company subject to its General Conditions of Service printed overleaf.



(SVHC)

			CAS No.	RL (%)
XIX	187	(D6)	540-97-6	0.050
XIX	188	(EDA)	107-15-3	0.050
XIX	189		7439-92-1	0.005
XIX	190	(D4)	556-67-2	0.050
XIX	191		61788-32-7	0.050
XX	192	1,7,7- -3-() [2.2.1] -2- (3-)	15087-24-8	0.050
XX	193	4,4'-(1,3-) (1,3-DMBBP)	6807-17-6	0.050
XX	194	(k) (BkF)	207-08-9	0.050
XX	195	(FLT)	206-44-0	0.050
XX	196	(PHE)	85-01-8	0.050
XX	197	(PYR)	129-00-0	0.050
XXI	198	2,3,3,3- -2-() () (HFPO-DA)	-	0.050
XXI	199	2-	110-49-6	0.050
XXI	200	4- (PTBP)	98-54-4	0.050
XXI	201	(4-) (TNPP)(0.1% 4-)	-	0.050
XXII	202	2- -2- -4'-	119313-12-1	0.050
XXII	203	2- -1-(4-)-2- -1-	71868-10-5	0.050
XXII	204		71850-09-4	0.050
XXII	205		-	0.050
XXIII	206	1-	1072-63-5	0.050
XXIII	207	2-	693-98-1	0.050
XXIII	208		94-26-8	0.050
XXIII	209	() **	22673-19-4	0.050
XXIV	210		143-24-8	0.050



CANEC23009890202

2023 09 21

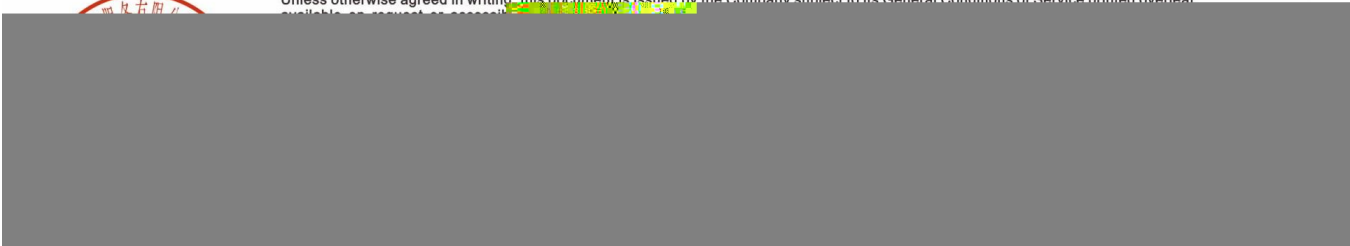
11 13

(SVHC)

			CAS No.	RL (%)
XXVI	222	S-([5.2.1.0'2,6] (

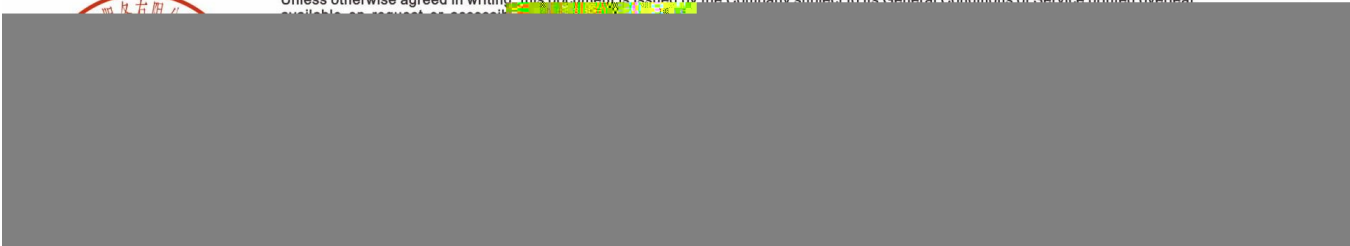
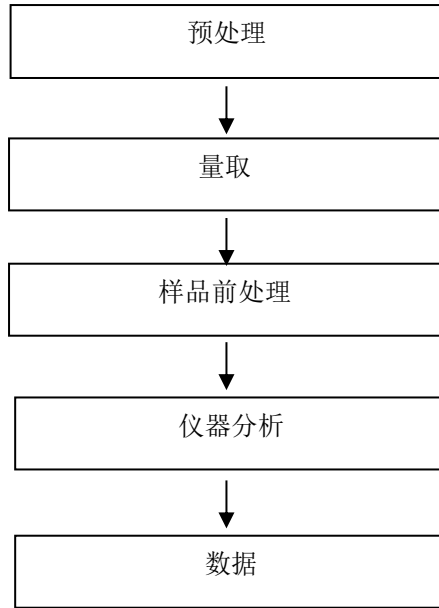


Unless otherwise agreed in writing, this document is issued by the Company subject to its General Conditions of Service printed overleaf available on request or access [www.chemours.com](#)





(SVHC)





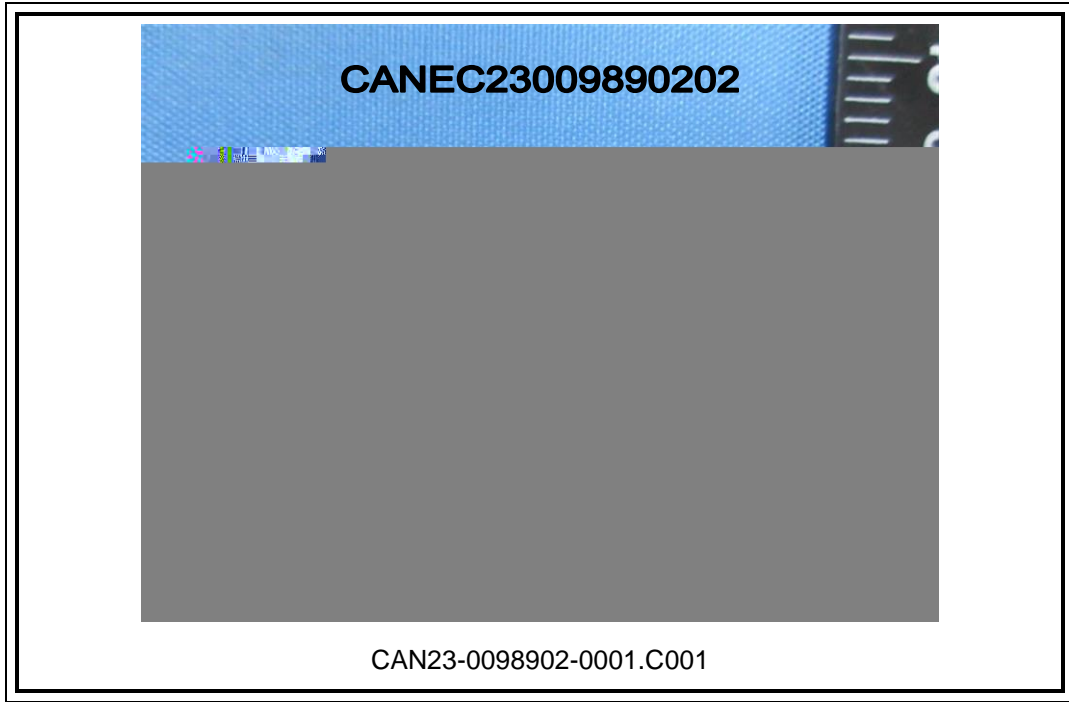
CANEC23009890202

2023 09 21

13

13

(SVHC)



SGS

*** **



Unless otherwise agreed in writing, this document is issued by the Company subject to its General Conditions of Service printed overleaf available on request or accessib

