

(SVHC)

15

LED

SGS

GZP23-013561

2023 09 13

2023 09 13 ~ 2023 09 27

(i) (2023 6 14 1907/2006 REACH) 235

(SVHC)

(ii) (2023 9 1 1907/2006 REACH) 5 (SVHC)

(iii) WTO 2021 6 1 1 (SVHC)

(iv) REACH) 7 (SVHC) (1907/2006

REACH SVHC	0.1% (w/w)	
---------------	------------	--

史丽兰

Violet Shi

scan to see the report



(SVHC)

1.

<http://echa.europa.eu/web/guest/candidate-list-table>

2. REACH

2.1

1907/2006 EC 33 57 59
0.1%

1907/2006 EC 57
59 (a) 1 / / 7 4 (b)
0.1%

2021 SVHC 1 5 0.1% w/w
SCIP 2008/98/EC ECHA

2.2

SVHC

31 1907/2006 REACH

2.3

0.1% (w/w) / 1272/2008 CLP
1907/2006 REACH

(SDS)

- 1272/2008 CLP
- 1272/2008 CLP
1272/2008 CLP ;
- 1272/2008 CLP

(a) 1 (w/w)

0.2

(b) PBT vPvB 0.1 (w/w)

(c) 0.1

(w/w)

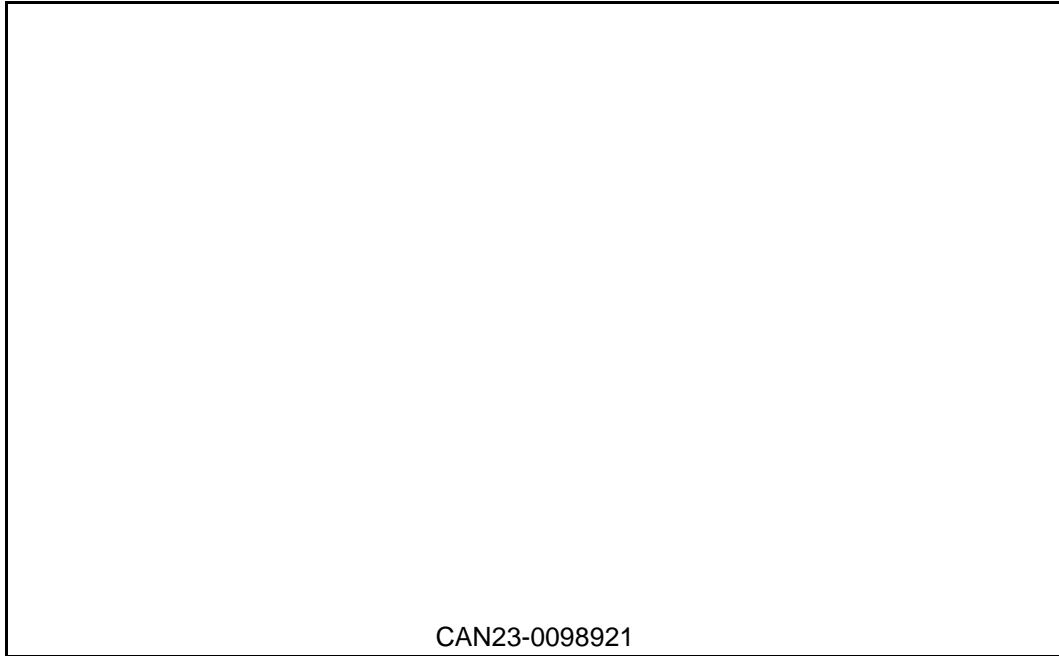
(d)

3. SVHC

SVHC

SVHC

(SVHC)



SGS

ID		ID	
A1		A2	
A3	/	A4	"PCBA"
A5		-	-

(SVHC)

		CAS No.	001 (%)	RL (%)
-	SVHC	-	ND	-

SVHC

		CAS No.	001 (%)	RL (%)
/	SVHC	-	ND	-

		CAS No.	002 (%)	RL (%)
XIX		7439-92-1	0.018	0.005
-	SVHC	-	ND	-

(1) SVHC RL SVHC SVHC
 (2) RL = (RL RL)
 ND = (RL) ND SVHC
 (3) *
 **

ICP-OES
 ICP-OES
 RL = 0.005% ((VI))
 RL= 0.0005% RL=0.0025%() RL=0.050%
 (4) § (CAS No.: 90-94-8) (CAS No.: 101-61-1) 0.1%(w / w)
 SVHC

(5)
 (6) /
 (7) / = SVHC

(SVHC)

SVHC:

			CAS No.	RL (%)
I	1	4,4'- (MDA)	101-77-9	0.050
I	2	2,4,6- -5- ()	81-15-2	0.050
I	3	C10-13 ()	85535-84-8	0.050
I	4		120-12-7	0.050

(SVHC)

			CAS No.	RL (%)
IV	38		109-86-4	0.050
IV	39	, , *	-	0.005
IV	40	*	1333-82-0	0.005
IV	41	*	513-79-1	0.005
IV	42	*	71-48-7	0.005
IV	43	*	10141-05-6	0.005
IV	44	*	10124-43-3	0.005
V	45	1,2,3-	96-18-4	0.050
V	46	1,2- - (C6-8) (C7)	71888-89-6	0.050
V	47	1,2- - (C7-11) ()	68515-42-4	0.050
V	48	1- -2-	872-50-4	0.050
V	49		111-15-9	0.050
V	50		302-01-2 /7803-57-8	0.050
V	51	*	7789-06-2	0.005
VI	52	1,2-	107-06-2	0.050
VI	53	4,4'- -3,3'-	101-14-4	0.050
VI	54	2-	90-04-0	0.050
VI	55		140-66-9	0.050
VI	56	*	-	0.005
VI	57	*	7778-39-4	0.005
VI	58		111-96-6	0.050
VI	59		117-82-8	0.050
VI	60	*	7778-44-1	0.005
VI	61	*	24613-89-6	0.005
VI	62		25214-70-4	0.050
VI	63	*		

(SVHC)

			CAS No.	RL (%)
VII	79		75-12-7	0.050
VII	80	*	17570-76-2	0.005
VII	81	N,N,N',N'-4,4'-()	101-61-1	0.050
VII	82	1,3,5-()-1,3,5-2,4,6-(1H,3H,5H)-(TGIC)	2451-62-9	0.050
VII	83	C.I. 4§	6786-83-0	0.050
VII	84	1,3,5-[(2S 2R)-2,3-2,4,6-(1H, 3H, 5H)-]-1,3,5-(-TGIC)	59653-74-6	0.050

(SVHC)

			CAS No.	RL (%)
VIII	116	*	1317-36-8	0.005
VIII	117	*	12036-76-9	0.005
VIII	118	*	1314-41-6	0.005
VIII	119	*	12060-00-3	0.005
VIII	120	*	12626-81-2	0.005
VIII	121		625-45-6	0.050
VIII	122	1,2-	75-56-9	0.050
VIII	123	N,N-	68-12-2	0.050
VIII	124	N-	79-16-3	0.050
VIII	125		776297-69-9	0.050
VIII	126	-	97-56-3	0.050
VIII	127	2-	95-53-4	0.050
VIII	128		72629-94-8	0.050
VIII	129	*	12065-90-6	0.005
VIII	130	*	8012-00-8	0.005
VIII	131	*	68784-75-8	0.005
VIII	132	*	11120-22-2	0.005
VIII	133	*	62229-08-7	0.005

VIII

(SVHC)

			CAS No.	RL (%)
XII	157	2- -2- -4,6- (UV-320)	3846-71-7	0.050
XII	158	- (2-) (DOTE)	15571-58-1	0.050
XII	159	*	7790-79-6	0.005
XII	160	*	10124-36-4 /31119-53-6	0.005
XII	161	- (2-) (DOTE) - (2-) (MOTE)	-	0.050
XIII	162	1,2- , (C6-10) / 1,2- , 0.3	-	0.050
XIII	163	5- -2-(2,4- -3- -1-)-5- -1,3- [1] 5- -2-(4,6- -3- -1-)-5- -1,3- [2] [[1] [2]]	-	0.050
XIV	164	1,3-	1120-71-4	0.050
XIV	165	2,4- -6-(5- -2- (UV-327)	3864-99-1	0.050
XIV	166	2-(2H- -2-)-4-()-6-() (UV-350)	36437-37-3	0.050
XIV	167		98-95-3	0.050
XIV	168		-	0.050
XV	169	(a)	50-32-8	0.050
XVI	170	4,4'- (A)	80-05-7	0.050
XVI	171	4- ()	-	0.050
XVI	172	(PFDA)	-	0.050
XVI	173		80-46-6	0.050
XVII	174	-1-	-	0.050
XVIII	175	() ()	-	0.050
XVIII	176	(BaA)	56-55-3	0.050
XVIII	177	*	10325-94-7	0.005
XVIII	178	*	513-78-0	0.005
XVIII	179	*	21041-95-2	0.005
XVIII	180	(CHR)	218-01	

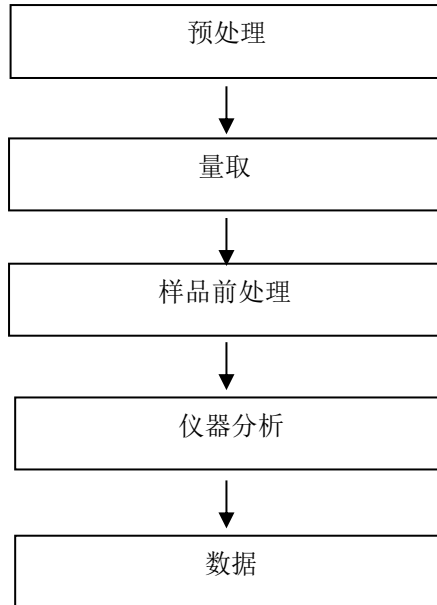
(SVHC)

			CAS No.	RL (%)
XIX	187	(D6)	540-97-6	0.050
XIX	188	(EDA)	107-15-3	0.050
XIX	189		7439-92-1	0.005
XIX	190	(D4)	556-67-2	0.050
XIX	191		61788-32-7	0.050
XX	192	1,7,7- -3-() [2.2.1] -2- (3-)	15087-24-8	0.050
XX	193	4,4'-(1,3-) (1,3-DMBBP)	6807-17-6	0.050
XX	194	(k) (BkF)	207-08-9	0.050
XX	195	(FLT)	206-44-0	0.050
XX	196	(PHE)	85-01-8	0.050
XX	197	(PYR)	129-00-0	0.050
XXI	198	2,3,3,3- -2-() () (HFPO-DA)	-	0.050
XXI	199	2-	110-49-6	0.050
XXI	200	4- (PTBP)	98-54-4	0.050
XXI	201	(4-) (TNPP)(0.1% 4-)	-	0.050
XXII	202	2- -2- -4'-	119313-12-1	0.050
XXII	203	2- -1-(4-)-2- -1-	71868-10-5	0.050
XXII	204		71850-09-4	0.050
XXII	205		-	0.050
XXIII	206	1-	1072-63-5	0.050
XXIII	207	2-	693-98-1	0.050
XXIII	208		94-26-8	0.050
XXIII	209	() **	22673-19-4	0.050
XXIV	210		143-24-8	0.050
XXIV	211	() **	-	0.050
XXV	212	1,4-	123-91-1	0.050
XXV	213	(BMP); (TBNPA); 2,3- -1- (2,3-DBPA)	-	0.050
XXV	214		-	0.050
XXV	215	B	77-40-7	0.050
XXV	216		111-30-8	0.050
XXV	217	(MCCP)	-	0.050
XXV	218	*	13840-56-7	0.005
XXV	219	(PDDP)	-	0.050
XXVI	220	(±)-1,7,7- -3-[(4-)] [2.2.1] -2- / (4- MBC)	-	0.050
XXVI	221	2,2'- -(4- -6-) (DBMC)	119-47-1	0.050

CANEC23009892102

2023

(SVHC)



(SVHC)

CANEC23009892102

2023 09 28

13

13